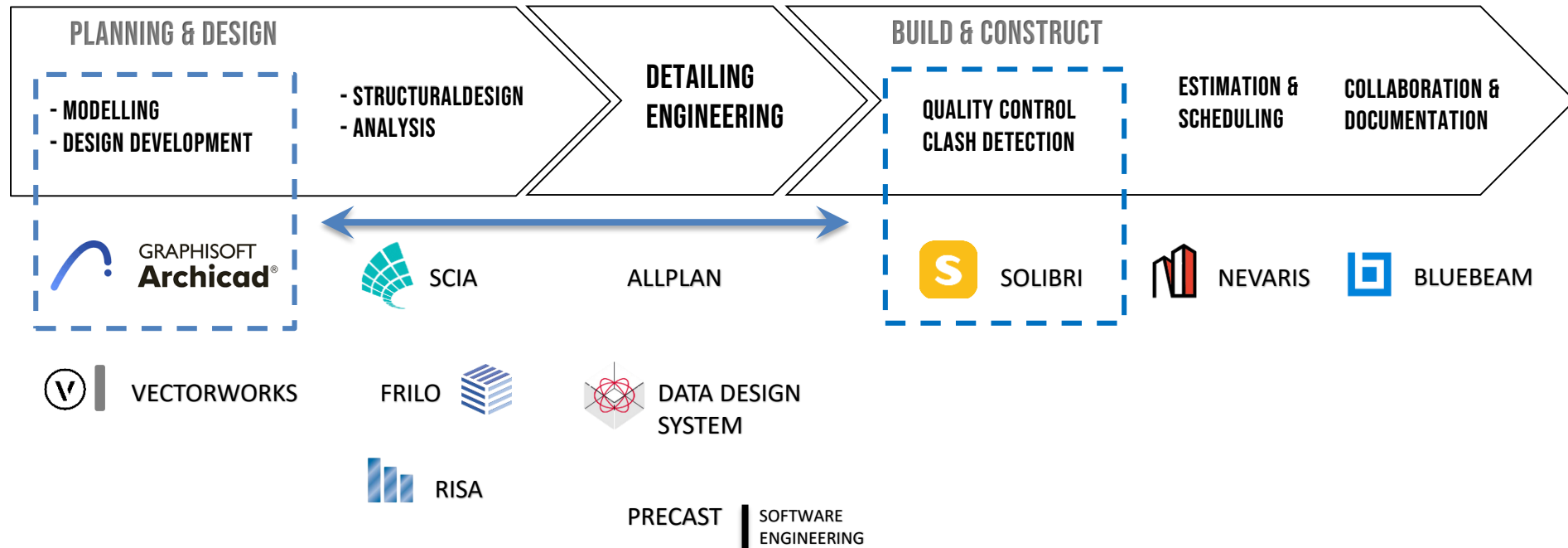




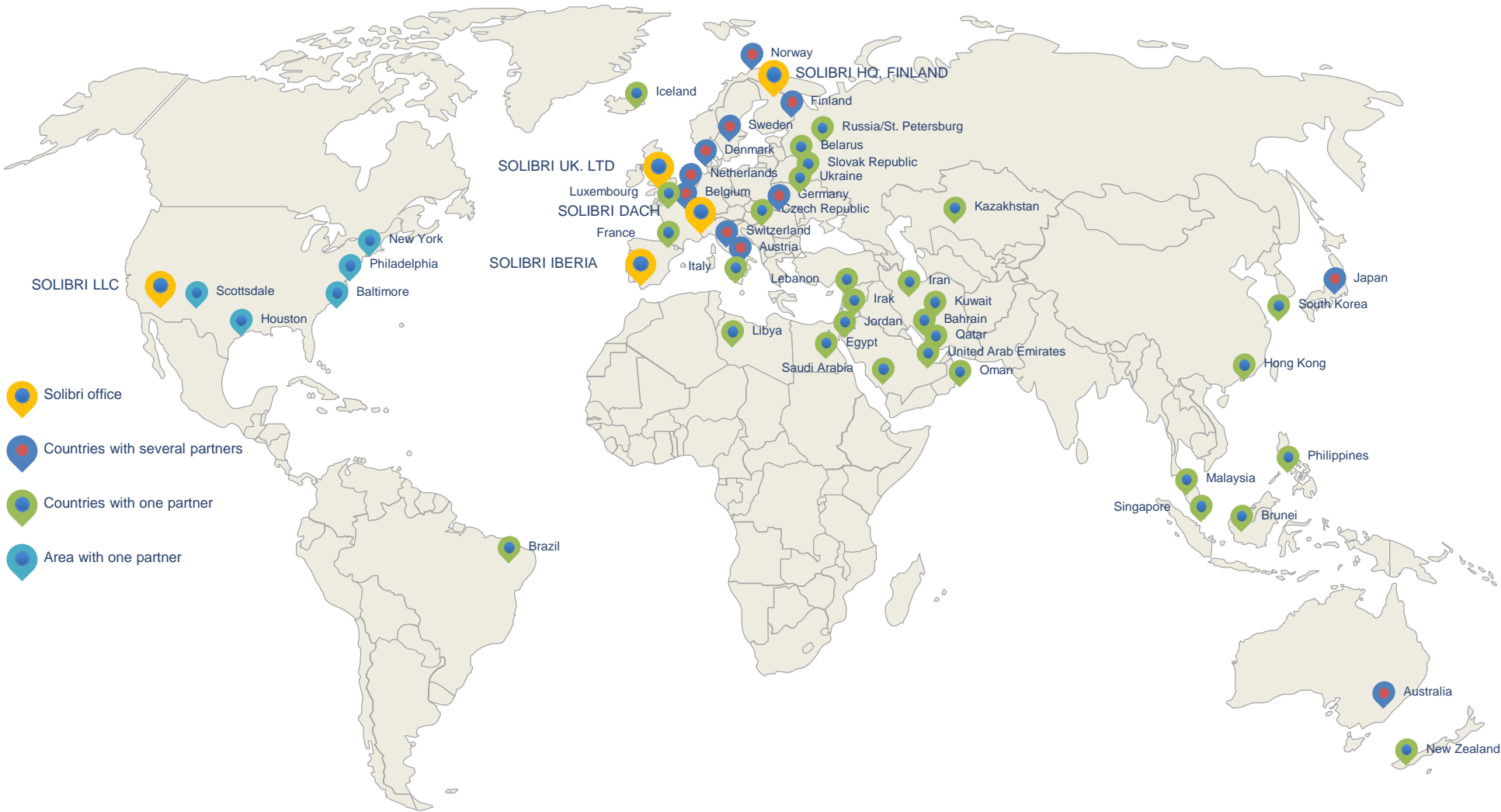
Drive Innovation
with Technology & Human Touch



Solibri Model Checker



SOLIBRI develops and markets Quality Assurance/Quality Control (QA/QC) solutions that improve the quality of Open BIM-based design and make the entire design process more productive.



PRODUCT COMPARISON



SOLIBRI OFFICE

- IMPORT IFC MODEL
- IMPORT PDF
- IMPORT DWG
- AUTO CHECK
- MANUAL CHECK
- MARKUP MODEL
- COMPARE MODEL
- CREATE REPORT
- INFORMATION TAKEOFF



SOLIBRI SITE

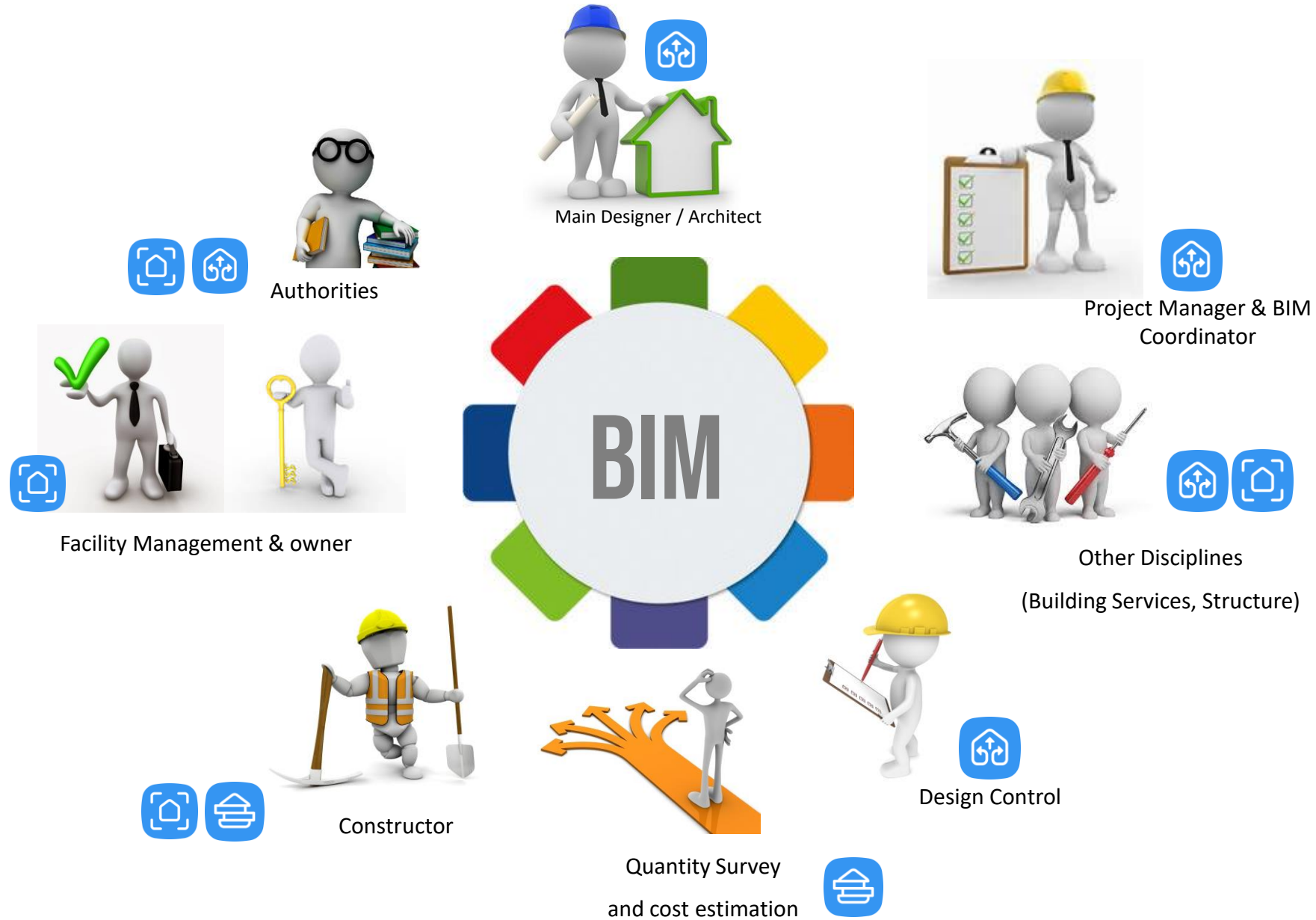
- IMPORT IFC MODEL
- IMPORT PDF
- IMPORT DWG
- ~~AUTO CHECK~~
- MANUAL CHECK
- MARKUP MODEL
- ~~COMPARE MODEL~~
- CREATE REPORT
- INFORMATION TAKEOFF



SOLIBRI ANYWHERE

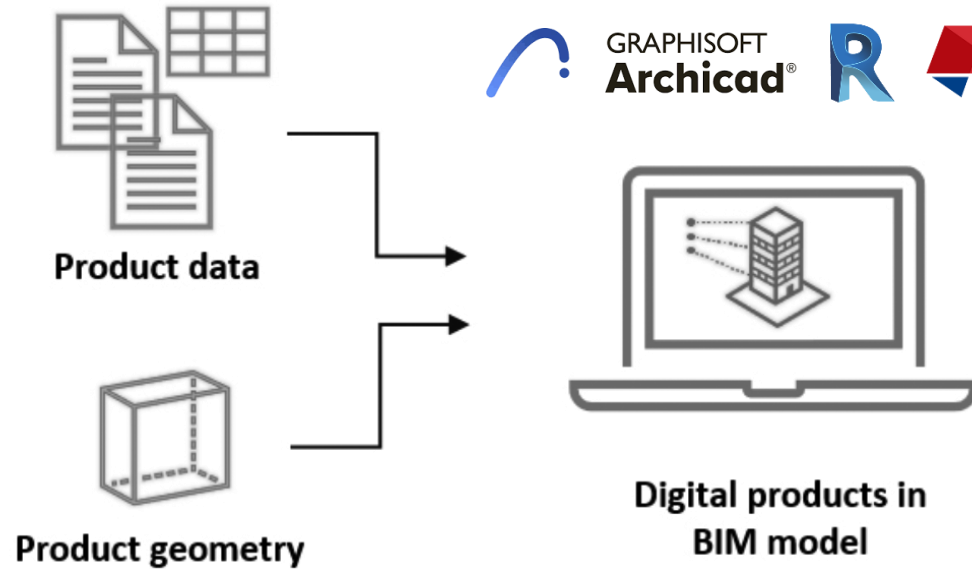
- IMPORT IFC MODEL
- IMPORT PDF
- ~~IMPORT DWG~~
- ~~AUTO CHECK~~
- MANUAL CHECK
- MARKUP MODEL
- ~~COMPARE MODEL~~
- CREATE REPORT
- ~~INFORMATION TAKEOFF~~

STAKEHOLDERS



ADVANCE CLASH DETECTION

BIM AUTHORIZING TOOLS CLASH DETECTION



ADVANCE CLASH DETECTION



- INTERSECTION BETWEEN ELEMENTS
- HOLE IN STR MODELS
- MODEL STRUCTURE CHECK
- SPACE REQUIREMENTS
- COMPONENT CHECK
- MINIMUM ELEMENT REQUIREMENT
- DEFICIENCY DETECTION
- CUSTOM RULESET
- CLEARANCE / SPATIAL CHECKING
- DUPLICATE ELEMENTS
- INFORMATION CHECKING

ADVANCE MODEL CHECKER

Solibri Office - Demo Solibri Files

FILE MODEL CHECKING COMMUNICATION INFORMATION TAKEOFF +

TO-DO (1/3) VIEWS

Spin Info

CHECKING

Ruleset - Checked Model

- สำหรับตรวจสอบโมเดลใน Phase Design
 - #1 ตรวจสอบพื้นที่ห้อง
 - #2 ตรวจสอบจำนวนเฟอร์นิเจอร์ในแต่ละห้อง
 - #3 ตรวจสอบจำนวนสุขภัณฑ์ในห้องน้ำ
 - #4 ตรวจสอบงานติดตั้งประตู

RESULT SUMMARY

Issue Count	26	0	0
Issue Details	15	0	0

RESULTS

No Filtering Automate

Results

- Assembly, Fastener, Wall too close to Door component [0/1]
- Slab too close to Door component [0/1]
- Suspended Ceiling too close to Door component [0/3]
- Suspended Ceiling, Covering too close to Door component [0/1]
- Suspended Ceiling, Object too close to Door component [0/2]
- Suspended Ceiling, Wall too close to Door component [0/4]
- Wall too close to Door component [0/13]
- Wall, Window too close to Door component [0/1]

INFO

#4 ตรวจสอบงานติดตั้งประตู

Description [Hyperlinks](#)

This rule checks there is enough clearance on both sides of doors.

(Solibri, Inc. - 2018-12-12)

Support Tag: SOL/226/3.0

[Rule Help](#)

PARAMETERS

Severity Parameters

Checked Components

State	Component	Property	Operator	Value
Include	Door			
Exclude	Door	(Classification not loaded) B...	One Of	[Hatch]

Checked Free Area Dimensions

Width (W)

Adjustment (A_W) 0.00 m min 0.00 m max 0.00 m

Depth (D)

Adjustment (A_D) 0.00 m min 1.00 m max 1.00 m

Height (H)

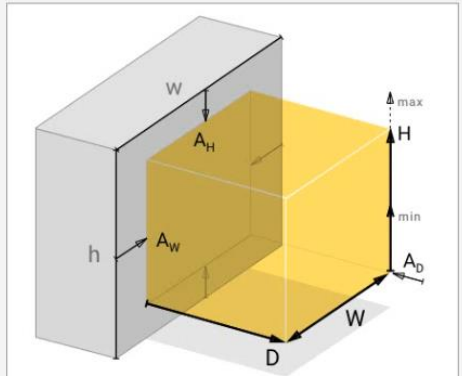
Adjustment (A_H) 0.00 m min 0.00 m max 0.00 m

Check Both Sides of the Doors and Windows

Allow floating in front of the component

Allow floating from the edge of the component

Maximum Free Area Distance From Component 0.00 m

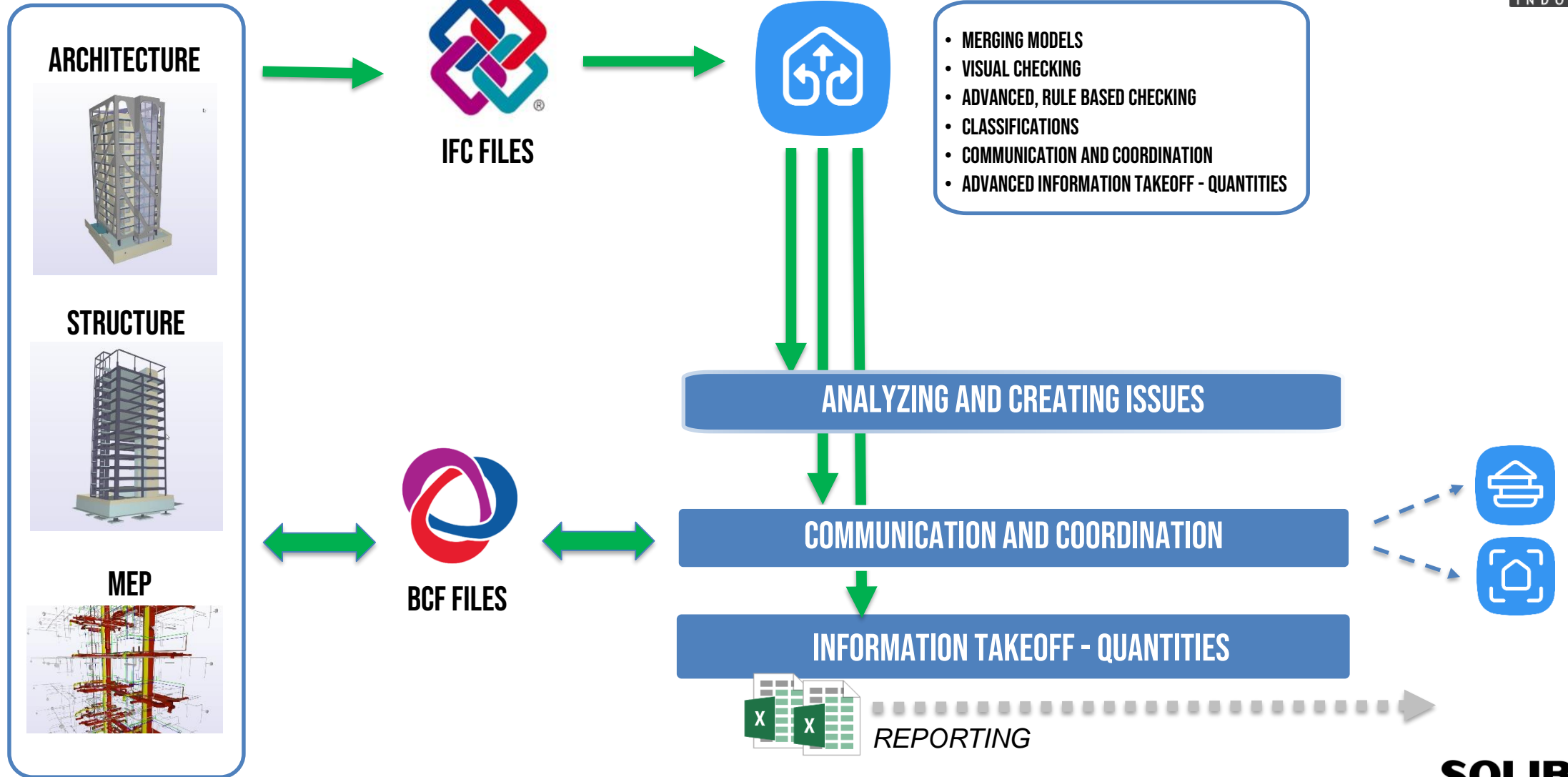


This rule checks if components have enough unobstructed free space next to them. If walls are found near components, only the directions away from walls are checked.

The required free space is based on the component's dimensions and adjusted if adjustment values are specified. A positive adjustment reduces and negative increases the free space. Minimum and maximum values sets final limits to the checked free space. Match min with max to check fixed-size free space.

Selected: 0

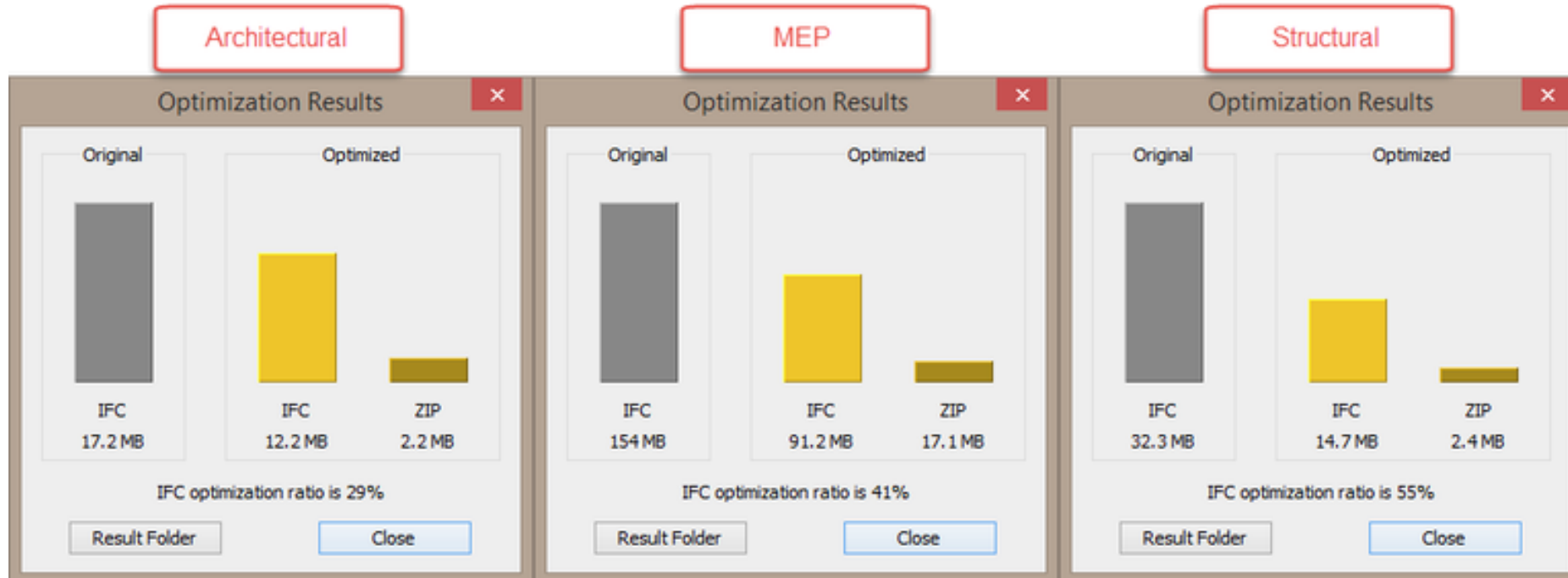
OUTPUT



PROJECT SCHEMATIC



SOLIBRI IFC OPTIMIZER



$$(17.2 - 12.2) * 100 / 17.2 = 29\%$$

$$(154 - 91.2) * 100 / 154 = 41\%$$

$$(32.3 - 14.7) * 100 / 32.3 = 55\%$$

WHY SOLIBRI?

Copenhagen Airport

Improved collaboration and
400.000 in cost savings

Copenhagen Airport has around 100 projects every year to accommodate the needs of increasing number of passengers. With the help of BIM and Solibri, the quality of the projects has improved – in addition to achieving generous cost savings.

February 12, 2020 | Projects



SYSTEM REQUIREMENT



SOLIBRI	RECOMMENDED SYSTEM REQUIREMENTS
Processor	Intel® Core™ i7, AMD Ryzen™ 5 (or better)
Operating System	Microsoft® Windows® 10 or later macOS Mojave or later
Graphics Card	High performance graphics card with OpenGL version 3.3 support or better. Preferably NVidia® GeForce GTX 1060 or AMD® Radeon™ RX 570 or better. Intel cards not recommended.
RAM	16 GB RAM, preferably more
Hard disk	Several GB of available hard disk drive space is recommended.
Mouse	Wheel mouse or similar functionality

ONLINE SERVICE

- TECHNICAL SUPPORT



Online



Whatsapp Service



Remote Service

- ONLINE TRAINING



zoom Online Hands-on Training & Paid Training

- ONLINE RESOURCE & SOSIAL MEDIA

www.applicadindonesia.com



Applicad Indonesia

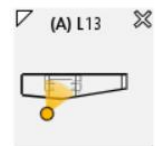




MODEL TREE

- (A) Sheung_Wan_Stacked_Tower_ARS
- (B) Sheung_Wan_Stacked_Tower_MEP

INFO



Selected: 0

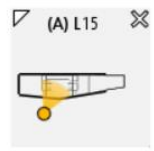
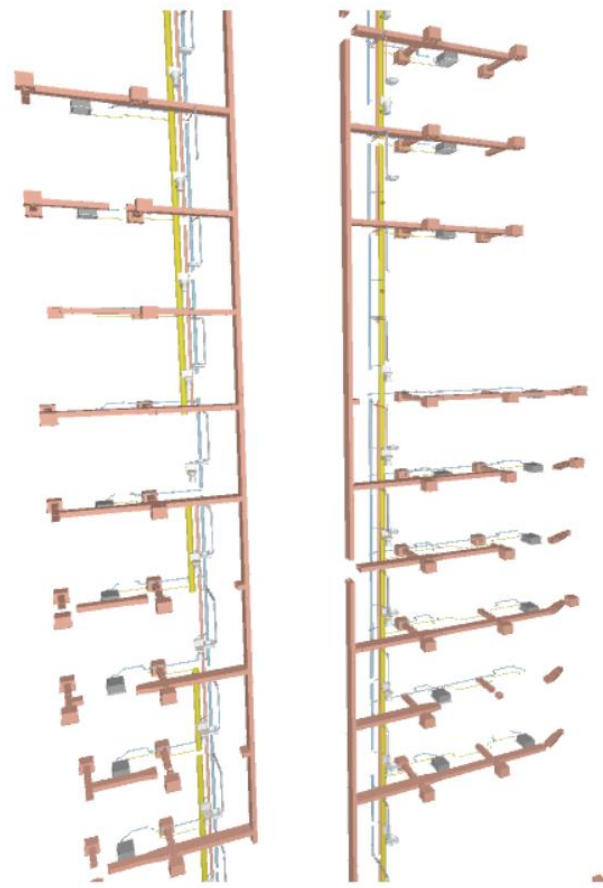
MODEL TREE

- (A) Sheung_Wan_Stacked_Tower_ARS
- (B) Sheung_Wan_Stacked_Tower_MEP

INFO

(B) Sheung_Wan_Stacked_Tower_MEP

Property	Value
Name	Sheung_Wan_Stacked_Tower_MEP
Short Name	B
Application	ARCHICAD
Discipline	Plumbing
Color Map	Architecture.material
Model Categories	



Selected: 2,967

FILE MODEL CHECKING COMMUNICATION INFORMATION TAKEOFF BCF LIVE CONNECTOR SCORE VIEWS

Spin Info

MODEL TREE

- Beam
- Building Element Part
- Column
- Curtain Wall
- Distribution Element
- Door**
- Furniture
- Member
- Object
- Opening
- Plate
- Slab
- Transport Element
- Wall

3D

INFO

(A) Sheung_Wan_Stacked_Tower_ARS

Property	Value
Name	Sheung_Wan_Stacked_Tower_ARS
Short Name	A
Application	ARCHICAD
Discipline	Architectural
Color Map	Architecture.material
Model Categories	

Selected: 209

CHECKING

Ruleset - Checked Model					
§ Floor Heights				△	
▼ #222 Component Distance					
§ Distance Between Fresh Air and Outlet Valves					—
§ Basin Must Locate Near Toilet Seat					—
§ Distance Between Columns/Beams and MEP com				△	
▼ #171 Component Property Values Must Be Consistent					
§ Component Thickness Must Be Consistent					OK
§ Door and Window Top Elevation Must Be Consiste				△	
§ Component Height Must Be Consistent				△	
§ Components with the Same Name Must Have Sar				△	
▼ # General Space					
§ Free Area in Front of Components (Door)				△ △ ×	

RESULTS

Results
▶ Beam, Object, Slab, Wall too close to Door component [0/1]
▶ Distribution Element, Wall too close to Door component [0/1]

INFO

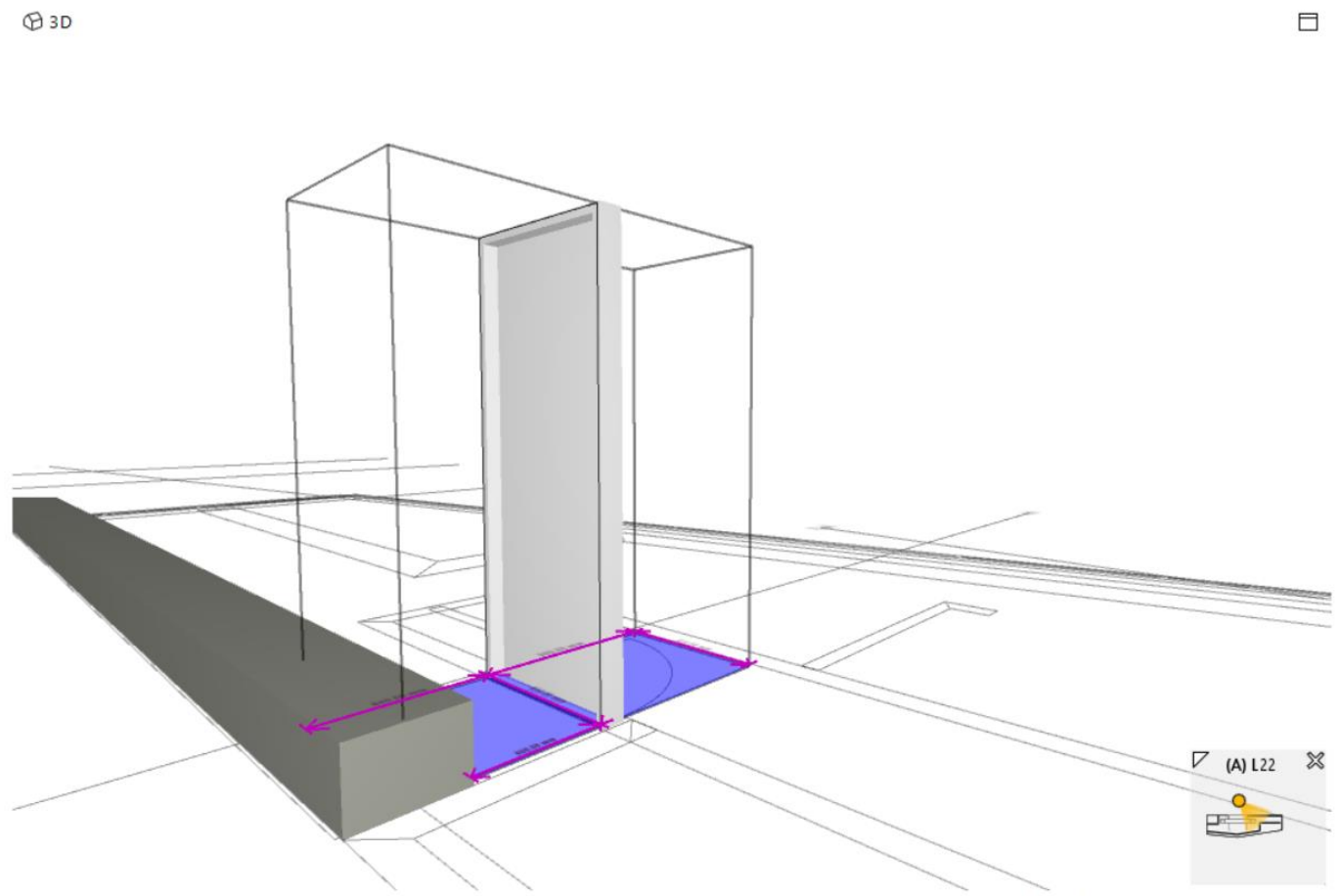
§ Free Area in Front of Components (Door)

Description [Hyperlinks](#)

This rule checks there is no blocking components in front of certain components.

(Solibri, Inc. - 2021-11-25)

Support Tag: SOL/226/3.1



Selected: 209

— AppliCAD —

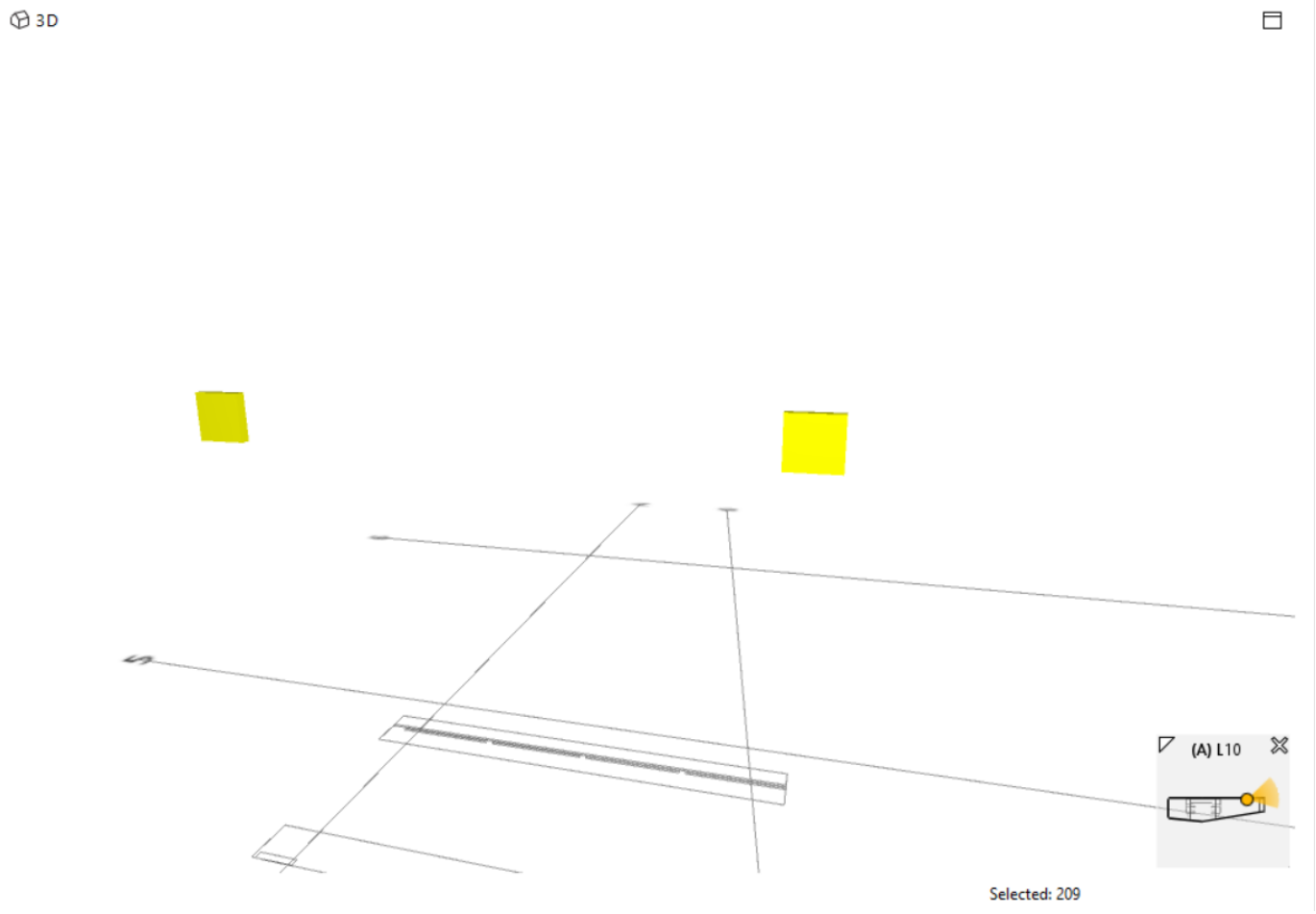
CHECKING			
Ruleset - Checked Model			
§ Distance Between Fresh Air and Outlet Valves			—
§ Basin Must Locate Near Toilet Seat			—
§ Distance Between Columns/Beams and MEP com		△	
▼ #171 Component Property Values Must Be Consistent			
§ Component Thickness Must Be Consistent			OK
§ Door and Window Top Elevation Must Be Consist		△	
§ Component Height Must Be Consistent		△	
§ Components with the Same Name Must Have Sar		△	
▼ #9 General Space			

RESULTS	
Results	
(A) Wall.7.b	
▼ Wall components, ENZ_CEILING 01 50, in (A) L10, Length differ [0/2]	
△ Length is 275.00 mm	
(A) Wall.9.13	
(A) Wall.9.30	
▶ △ Length is 278.91 mm	
▼ Wall components, ENZ_CEILING 01 50, in (A) L11, Length differ [0/2]	
▶ △ Length is 275.00 mm	

INFO

Wall components, ENZ_CEILING 01 50, in (A) L10, Length differ

Description



Selected: 209

PRESE... New Presentation Report

- Presentation 1 (1)
- Presentation 2 (2)**

ISSUES New Issue

Presentati...	No.	Title	Tracking...	Status
Presentation	1 (A)	6		Open
Presentation	2 (A)	7		Open

ISSUE DETAILS 2 3D

Title: (A) Slab.21.2, (A) Wall.21.42 too close to (A) Doc

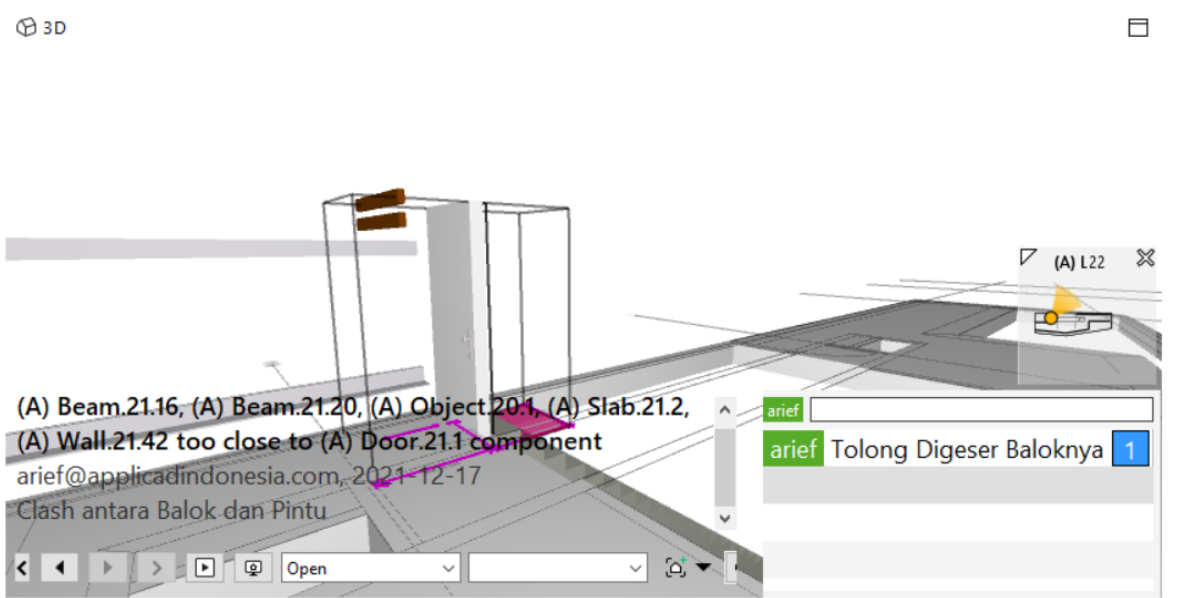
Description: Clash antara Balok dan Pintu

Coordination: Rejected (2) Rejected

Status: Open Issue Type: Error

Stage: Due Date: Priority:

Responsibilities and Labels: MEP +



ISSUE SORTER M

1		(A) Wall.0.12, 15%
2		(A) Beam.21.16, (A) Beam.21.20, (A) Object....

— AppliCAD —

MODEL TREE

- ENZ_CONCST_CONCST 250 x 200
 - (A) Column.0.250
 - (A) Column.0.480
 - (A) Column.0.58
 - (A) Column.10.2

CLASSIFICATION

- Building Elements - General (Locked)
- Building Elements - Unifomat (Locked)
- Space Grouping (Locked)

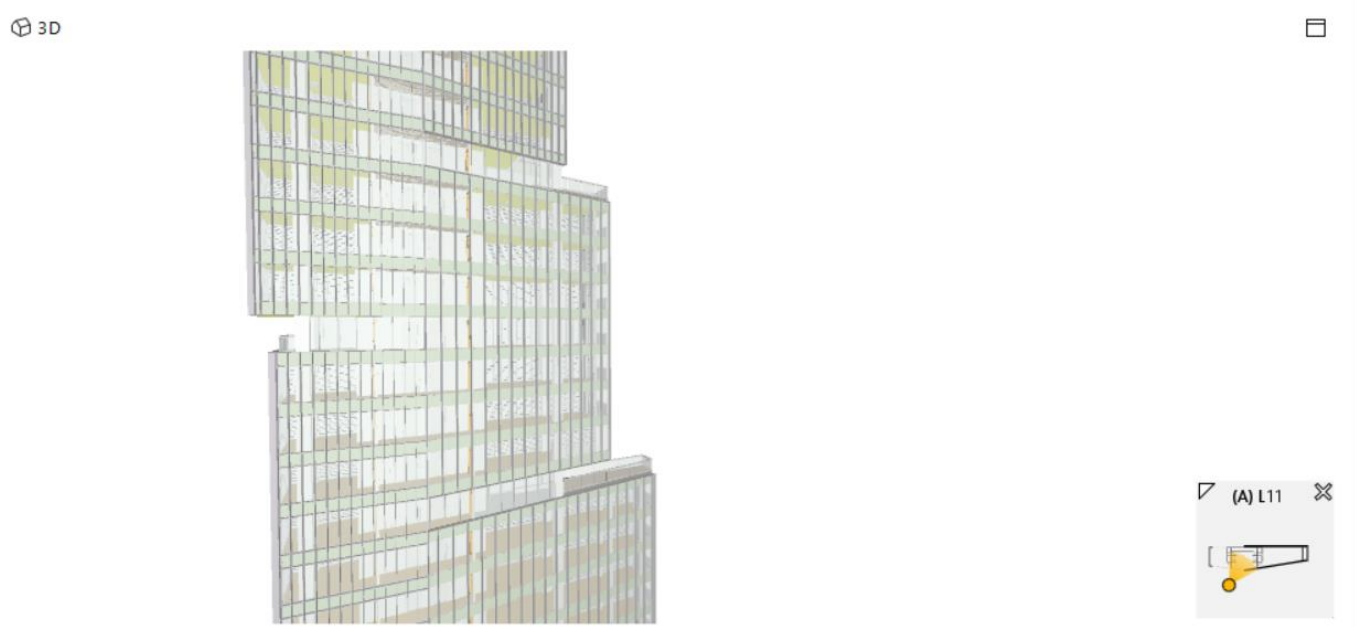
SELECTION BASKET No Selection Sets

- (A) Sheung_Wan_Stacked_Tower_ARS

INFO

(A) Column.0.250

Hvørlinks		AC_Pset_RenovationAndPhasing		Pset_ColumnCommon			
Identification	Location	Issues	Quantities	Material	Profile	Relations	Classification
Property	Value						
Model	(A) Sheung_Wan_Stacked_Tower_ARS						
Discipline	Architectural						
Name	CRE - 001						
Type	ENZ_CONCST_CONCST 250 x 200						



INFORMATION TAKEOFF Beam

Component	Type	Count	Color
Beam	ENZ_CONCST_CONCST 150 x 600	21	Yellow
Beam	ENZ_CONCST_CONCST 200 x 600	63	Cyan
Beam	ENZ_CONCST_CONCST 250 x 600	19	Magenta
Beam	ENZ_CONCST_CONCST 500 x 400	25	Blue
Beam	ENZ_CONCST_CONCST 500 x 600	220	Orange

Selected: 209

— AppliCAD —

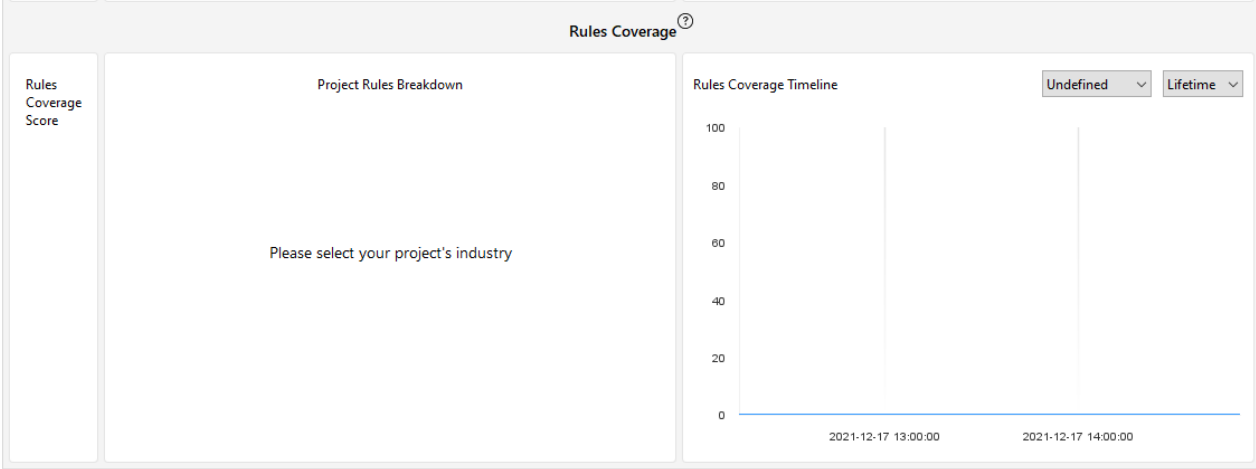
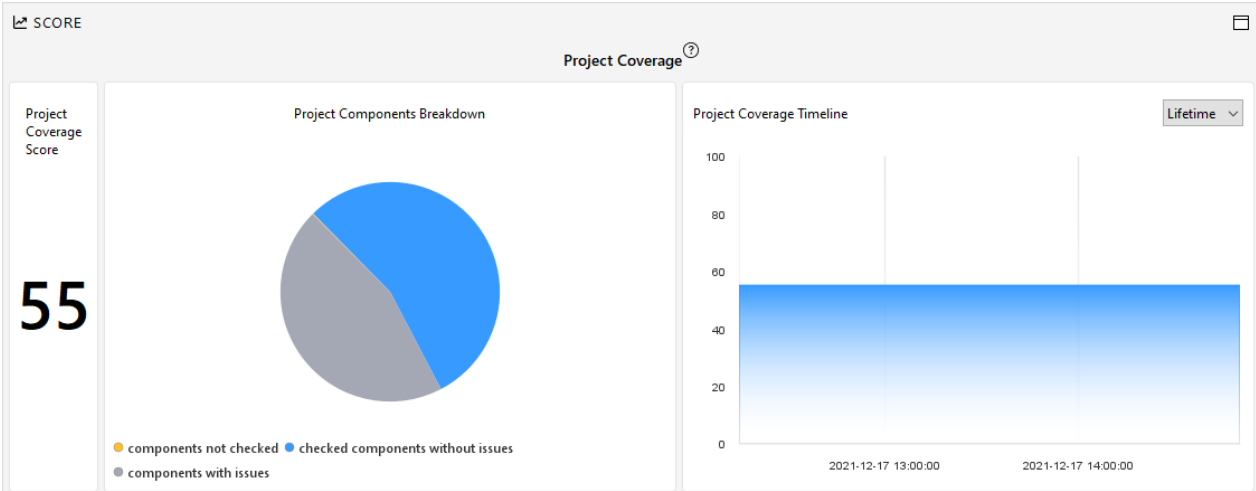
CHECKING

Ruleset - Checked Model

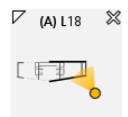
Rule ID	Rule Name	Status	Details
#1	General Intersection Rule	OK	
	Building Services and Doors and Window	OK	
	Building Services and Beams and Colum	OK	
	Intersections between HVAC and Electric	OK	
	Intersections in HVAC Models	OK	
	Wall - Wall Intersections	OK	
	Door Intersections	OK	
	Doors and Windows Shouldn't Intersect with Structural Components	OK	
#11	Model Should Have Components	Warning	
#111	Floor and Gross Area Analysis	Warning	
	Key Figure Analysis	Warning	
#23	Components Must Touch Other Components	Warning	
#220	Floor Distance	Warning	
	Floor Heights	Warning	
#222	Component Distance	Warning	
#171	Component Property Values Must Be Consistent	Warning	

To-Do ✓ Show Complete

- Classification Tasks
 - Do 'Building Elements - General' classification
 - Do 'Building Elements - Uniformat' classificat...
- Space Grouping Tasks
 - Do Space Grouping
- Ruleset Tasks
 - Check and go through results of 'BIM Validati...



— AppliCAD —





Adobe Stock | #197601130

— AppliCAD —

THANK YOU!